

CELLIFE CAMEL

Recharging Cells Naturally
MAGNETIC FIELD GENERATOR



MAGNETIC RESONANCE THERAPY

to stimulate cell metabolism

What does CELLIFE CAMEL do?



The healing powers of magnetic fields have been known for centuries. The energy field of our earth is a building block of our life. Nature lives from the power of electromagnetic fields. It is precisely these energy fields that assume an important functional role in bodies. They are responsible for healing processes, regeneration processes, balance and well-being.

Every body movement in the daily routine means energy expenditure and consumption. Mental activity is also not possible without expenditure of energy. Bodies' ability to use the immune system to heal disease also requires energy. The body draws this energy from around 100 trillion cells. Each individual cell is to be regarded as an energy source in itself. If the cell is healthy, all bodily functions function smoothly and the person feels healthy, fit and vital. Healthy cells are therefore the basis for keeping people healthy.

Feeling good in body means being free from disease, insomnia, imbalance, overload and disharmony. Nature forgives us nothing. If we break their laws, we become ill or susceptible to illness.

How can a disturbed cell metabolism express itself?



✘ Bodily functions no longer function smoothly. ✘ The body's detoxification function is disturbed.

✘ You feel tired, burned out, without energy and power.

The organism should therefore be supported in its performance in good time and in the long term so that the body's own defenses are mobilized in a gentle and effective way. **CELLIFE CAMEL** can gently activate the body's own healing powers in a natural way.

The **CELLIFE CAMEL** magnetic field generator sustainably supports cell regeneration by generating a pulsating, electromagnetic field that gently penetrates the entire body. This magnetic field can activate the cell membrane because it vibrates in the same frequency range. The organism is thus stimulated to help itself and to set the body's own regenerative powers in motion.

The mobilization of the body with the energy field takes place in a natural way and can be considered a natural healing process.

How does CELLIFE **CAMEL** work?

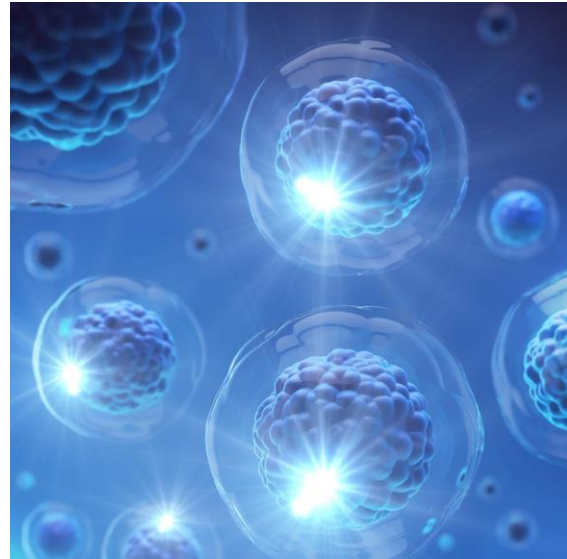
Healthy and high-energy cells normally divide into millions. This division process means that fresh and renewed cells are constantly available to the body. Used and energyless cells are rejected by the body. This regeneration cycle already decreases day by day. Stress and wear and tear cause disturbances in this process of cell regeneration. This can result in a general functional impairment of the organs.

Over the years, energy poverty sets in, which means that the body is no longer able to regenerate the cells and provide enough new energy. The lack of energy is constantly increasing. This functional weakness is usually referred to as a "disease", but it does not have to come to that.

Magnetic field therapy can get cell regeneration going again and thus increase general well-being. A healthy diet, sufficient exercise and a healthy and balanced environment do the rest.



Physical movement means muscle and nerve action. This in turn leads to protein production and the build-up of cell energy. A regeneration process occurs. It is scientifically known that electromagnetic forces play an important role in the regeneration process when muscles and nerves are actuated.



If an artificially generated magnetic field, which largely corresponds to the natural potentials in the body, is brought to the human body, the individual cells can no longer distinguish whether the excitation comes from the body or is artificially induced from outside. A lack of movement can thus be compensated for by regular use of the magnetic wave generator.

Where there is a lack of function and energy in cells, organs, tissue and bones, force fields are generated and strengthened. This improvement in the body's regulatory function can also have a positive effect on the immune system to fight bacteria and viruses.

The result is: that an intensive supply of nutrients such as oxygen and glucose, reach the deficient treatment sites with the blood.

A higher water absorption favors the purification process. Possible applications.

What positive effects can a functioning cell metabolism have on the body?



- ✓ The blood flow
- ✓ The detox
- ✓ The immune system
- ✓ The bone structure
- ✓ The nervous system
- ✓ The metabolism
- ✓ The digestion
- ✓ The wound healing
- ✓ The healing promotion
- ✓ The regeneration

What's Duration to See Result?

Everything good takes time. This also applies to the stimulation of the body's own regenerative powers. Cases in which positive feedback from users comes after only three days, that a significant improvement in the regeneration



behavior can be felt, are not uncommon. As a rule, however, it can be assumed that an improvement can occur after two to three weeks.

An effective energy boost can only be achieved if the application is carried out regularly twice or three sessions a day and each session will be 10 minutes.

Not everyone is physically active or has the time to do so. An accident or serious illness can be the reason for passive sports behavior. Nevertheless, the body needs kinetic energy! *CELLIFE* can be the replacement for what we lack in daily necessary movement. Stress, inner restlessness, tension and our environment block our regeneration systems. The *CELLIFE* magnetic wave generator can help to release these blockages, make you fit and regulate energy deficits.

Detoxification of the body is also a natural process. The higher the slugging, the stronger the magnetic field therapy can positively influence the detoxification processes. The body is detoxified via the intestines, the kidneys, the mucous membranes and also via the skin. Before the toxins can be transported away via the blood, they have to be released from the tissue. *CELLIFE CAMEL* can sustainably support this process in the body. In the first 8-14 days you should drink more fluids to make the detoxification phase easier for the body.

The positive effect of magnetic field stimulation on the human organism has now been scientifically proven. However, the supporting energy of magnetic therapy is still unknown to most people.

studies and field reports about Electromagnetic:



Blood flow and oxygen supply are improved. The body will purify and detoxify.



Optimization of bodily functions and energy balance. Well-being, vitality and performance are increased.



Metabolism and immune system stimulated. The self-healing powers of the body activated.

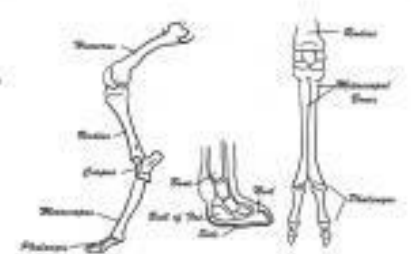
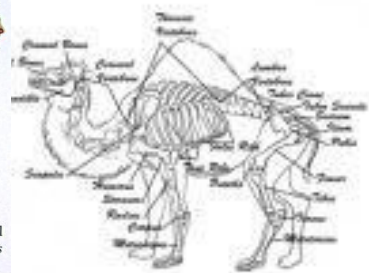
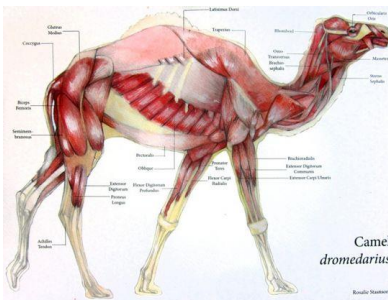
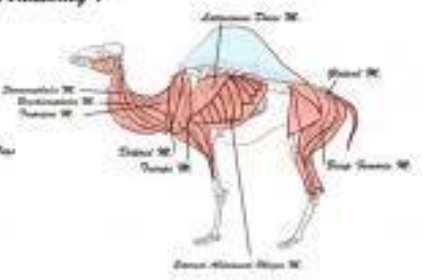
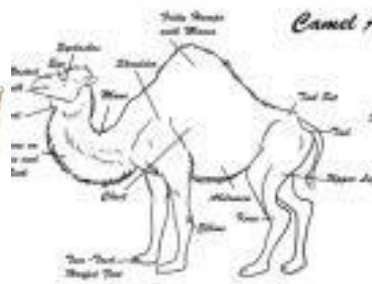
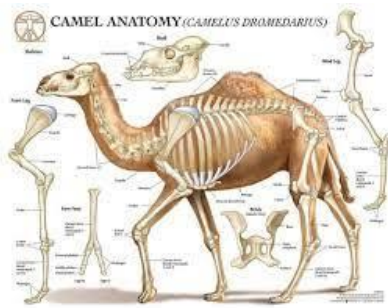


Pain is relieved.
Faster regeneration and healing after injuries and broken bones.

Areas of application of **CELLIFE CAMEL**

CELLIFE CAMEL can, for example, sustainably support the following bodily functions:

- ✓ Inflammations
- ✓ Fractures
- ✓ Pain treatment
- ✓ CAMELs – asthma
- ✓ Sprains, strains of ligaments and tendons, bruises
- ✓ Spinal relaxation
- ✓ Joint Inflammations
- ✓ Vitalization
- ✓ CAMELs have more energy and feel fit, powerful and vital.



The **CELLIFE CAMEL** System Accessories:

Magnetic resonance therapy to stimulate your cell metabolism

The **CELLIFE CAMEL** system stimulates your cell metabolism with a pulsating magnetic field and can thus increase your well-being and vitality. This helps your body to help itself and can thus contribute to your health in the long term.

With the **CELLIFE CAMEL system you get:**

✓ The control unit



The desired magnetic pulses are generated via the control unit. It is very easy to use and easy to use. The device is easy to operate. The front panel is used to set the unit for the start of treatment. The green LED above the power switch signals

the operating status. If the LED lights up after switching on, the unit is ready for operation.

The step switch on the right side labeled "Step" is used to set the field strength of the mat.

The device has 6 levels, each of which is indicated by a LED and a number LED.

The smallest level produces a field strength of 15 μT , the highest level is level 6, which produces a field strength of 100 μT .

For the treatment of CAMELs, level 4 and 5 is the best.

The treatment time is fixed at 10 minutes and cannot be changed.

By pressing the start button, the program begins to run. The LED green pulse, indicates that the device is working in program mode.

The program sequence is processor-controlled and requires no further operation.

After the program time of 10 minutes, the unit ends the treatment phase. The device switches off.

✓ **The plug-in power supply for the power connection**

The device is powered by a battery and has a built-in charger for charging the battery.

With the provided power cord, the device can be plugged into any 230 V ac outlet for charging.

✓ **The magnetic field mat**

The magnetic field two mats are suitable for use on the whole body or adjustable to fit the CAMEL's back, if necessary, or on individual parts of the body.



Contact: **Dr.Mohammad Al Hariri**

Germany

Mobile: **+4917660825533**

Email: **Mthariri@cellifegroup.com**

Web: **www.cellifegroup.com**